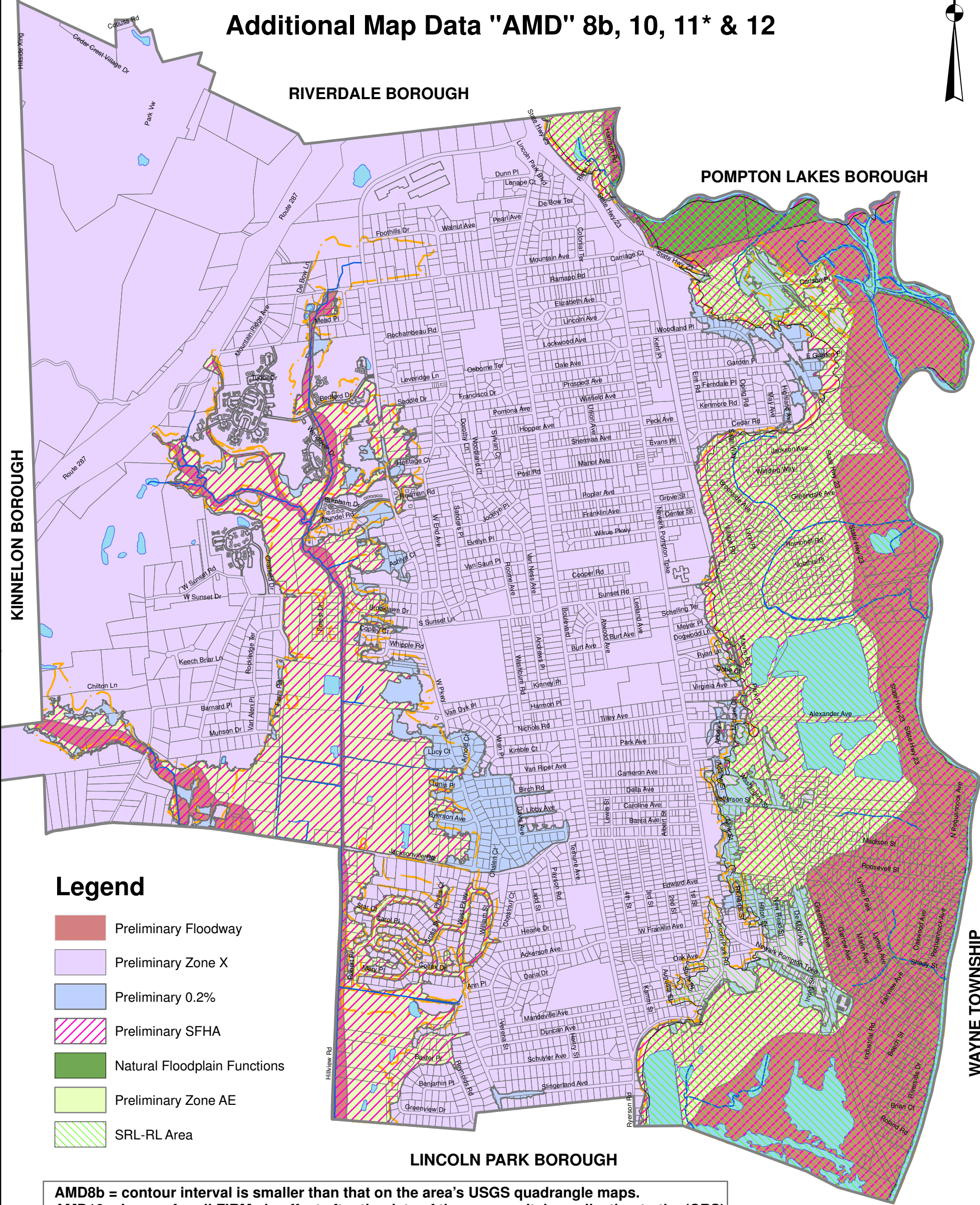


# TOWNSHIP OF PEQUANNOCK

## ACTIVITY 440 - FLOOD DATA MAINTENANCE

### Additional Map Data "AMD" 8b, 10, 11\* & 12



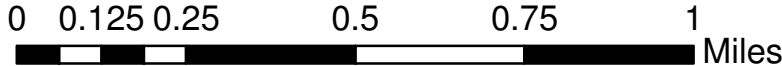
#### Legend

- Preliminary Floodway
- Preliminary Zone X
- Preliminary 0.2%
- Preliminary SFHA
- Natural Floodplain Functions
- Preliminary Zone AE
- SRL-RL Area

**AMD8b** = contour interval is smaller than that on the area's USGS quadrangle maps.  
**AMD10** = Layers for all FIRMs in effect after the date of the community's application to the (CRS)  
**AMD11\*** = Layers from Hazus-MH and the community's repetitive loss areas.  
**AMD12** = Areas with natural floodplain functions.

Impact Adjustment

$$r_{AMD} = \frac{a_{AMD}}{a_{SFHA}} = \frac{1678 \text{ ac.}}{1678 \text{ ac.}} = 1.0$$



\* Hazus-MH is not compatible with ArcMAP 10.3.1